

JUMO GmbH & Co. KG
Delivery address: Mackenrodtstraße 14,
36039 Fulda, Germany
Postal address: 36035 Fulda, Germany
Phone: +49 661 6003-0
Fax: +49 661 6003-607
E-mail: mail@jumo.net
Internet: www.jumo.net

JUMO Instrument Co. Ltd.
JUMO House
Temple Bank, Riverway
Harlow, Essex CM20 2DY, UK
Phone: +44 1279 635533
Fax: +44 1279 635262
E-mail: sales@jumo.co.uk
Internet: www.jumo.co.uk

JUMO Process Control, Inc.
8 Technology Boulevard
Canastota, NY 13032, USA
Phone: 315-697-5866
1-800-554-JUMO
Fax: 315-697-5867
E-mail: info@jumo.us
Internet: www.jumo.us



JUMO HEATtemp

Screw-in RTD temperature probe for heat meter with connection cable for direct installation (type DS/DL)

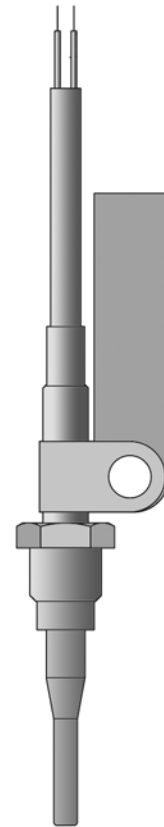
- For temperatures from 0 to 180 °C
- Approval for heat meter MID and domestic approval as exchangeable temperature probes
- Meets the requirements as per DIN EN 1434, AGFW FW202 and FW211
- Approval for cold meter and cold / heat meter combinations
- Paired and calibrated as per the German calibration regulations
- Production certified as per module D of the MID (CE and metrology sign)

Heat meter RTD temperature probes are used for temperature measurement in closed-loop pipe systems. Direct installation without additional immersion sleeve is recommended to achieve optimum thermal coupling to the medium to be measured in the heating system.

The temperature probes are approved in accordance with the EU directive 2004/22/EC (MID) as well as according to the German calibration regulations (domestic approval).

Temperature probes type DS are used for pipes of a nominal width of < 50 mm. Installation in ball valves has proven to be the optimum installation location, see data and price sheet 90.2440. In addition, the system need not be discharged during installation and/or replacement of the temperature probe once the valid calibration period has elapsed.

The temperature probes are available in paired and calibrated execution. The state-approved test body for heat KF2 is responsible for this purpose. Moreover, the production is certified according to module D of MID, and the temperature probes are also available with the CE and metrology sign.



Technical Data

Connection	Wire end ferrules
Connection cable	PVC, PUR, TPE, Silicone; unshielded or shielded For the max. connection cable lengths, refer to the table on the following page
Process connection	Type DS: screw connection M 10x1, brass as per DIN EN 1434 Type DL: thread G 1/4, G 1/2 stainless steel
Thermowell	Type DS: stainless steel Ø 5.4 mm stepped down to Ø 3.3/Ø 3.6 mm Type DL: stainless steel Ø 8 mm stepped down to Ø 6 mm
Measuring insert	Platinum temperature probe as per DIN EN 60751 Rated value: Pt100, Pt500, Pt1000; class B Connection: 2-wire/4-wire circuit
Temperature	0 to 180 °C
Temperature difference	3 to 180 K
Minimum immersion depth	Type DS: 15 mm Type DL: 30 mm
Fitting length	Type DS: 25 to 60 mm Type DL: 60 to 280 mm
Maximum pressure	PN 25
Flow velocity	2 m/s (water)
Response behavior	Type DS: $t_{0.5} = 2$ s Type DL: $t_{0.5} = 6$ s
Thermoelectric voltage	≤ 5 μ V
Ambient conditions	Climatic 0 to 70 °C Protection class IP65 Electromagnetic E1 Mechanical M3

JUMO GmbH & Co. KG
 Delivery address: Mackenrodtstraße 14,
 36039 Fulda, Germany
 Postal address: 36035 Fulda, Germany
 Phone: +49 661 6003-0
 Fax: +49 661 6003-607
 E-mail: mail@jumo.net
 Internet: www.jumo.net

JUMO Instrument Co. Ltd.
 JUMO House
 Temple Bank, Riverway
 Harlow, Essex CM20 2DY, UK
 Phone: +44 1279 635533
 Fax: +44 1279 635262
 E-mail: sales@jumo.co.uk
 Internet: www.jumo.co.uk

JUMO Process Control, Inc.
 8 Technology Boulevard
 Canastota, NY 13032, USA
 Phone: 315-697-5866
 1-800-554-JUMO
 Fax: 315-697-5867
 E-mail: info@jumo.us
 Internet: www.jumo.us



Cable cross-section	Max. connection cable length AL for Pt100	Max. connection cable length AL for Pt500	Max. connection cable length AL for Pt1000
0.22 mm ²	2500 mm	12500 mm	25000 mm
0.34 mm ²	3500 mm	17500 mm	35000 mm
0.50 mm ²	5000 mm	25000 mm	50000 mm

Note:

Also take into account a possible connection cable length limitation due to the design approval of the arithmetic unit/counter.
 For 4-wire circuit, the max. connection cable lengths are limited due to the requirements of the arithmetic unit/counter.

Approval overview

Version	Basic type	Approval	
		Type	Number
	90.276-F40 (DS) 902425/05 (DS) not for new developments	Domestic (Germany)	22.30/89.07 (Pt100) (150 °C) 22.30/89.08 (Pt500) (150 °C) 22.30/89.09 (Pt1000) (150 °C)
	902425/10 (DS)	Domestic (Germany)	22.30/99.10 (105 °C)
	902425/50 (DS)	Domestic (Germany)	22.30/02.03 (150 °C)
	902425/10 (DS)	Domestic (Germany) as per DIN EN 1434	22.70/99.10 (105 °C)
	902425/50 (DS)	Domestic (Germany) as per DIN EN 1434	22.70/02.03 (150 °C)
	902428/50 (DS)	Module B as per MID ¹	A0445-2112-2007 (150 °C)
	902455/50 (DS)	Domestic (Germany; Cold)	22.77/08.04 (150 °C)
	902425/20 (DS)	Domestic (Germany)	22.30/99.04 (180 °C)
	902425/20 (DS)	Domestic (Germany) as per DIN EN 1434	22.70/99.04 (180 °C)
	902425/50 (DS)	Domestic (Germany)	22.30/02.09 (150 °C)
	902425/50 (DS)	Domestic (Germany) as per DIN EN 1434	22.70/02.09 (150 °C)
	902428/70 (DS)	Module B as per MID ¹	DE-06-MI004-PTB010 (150 °C)
	902428/20 (DS)	Module B as per MID ¹	DE-06-MI004-PTB012 (180 °C)
	902455/20 (DS) 902455/70 (DS)	Domestic (Germany; Cold)	22.77/08.04 (150 °C)
	90.280-F50 (DL)	Domestic (Germany)	22.30/91.05 (180 °C)
	902425/30 (DL) 902425/40 (DL)	Domestic (Germany) as per DIN EN 1434	22.70/00.01 (180 °C)
	902428/30 (DL) 902428/40 (DL)	Module B as per MID ¹	DE-06-MI004-PTB011 (180 °C)
	902455/30 (DL) 902455/40 (DL)	Domestic (Germany; Cold)	22.77/09.01 (150 °C)

¹ MID = Measuring Instruments Directive, European measuring instrument directive 2004/22/EC

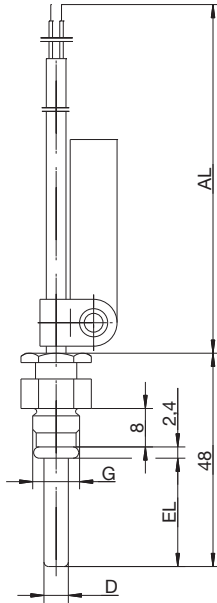
JUMO GmbH & Co. KG
 Delivery address: Mackenrodtstraße 14,
 36039 Fulda, Germany
 Postal address: 36035 Fulda, Germany
 Phone: +49 661 6003-0
 Fax: +49 661 6003-607
 E-mail: mail@jumo.net
 Internet: www.jumo.net

JUMO Instrument Co. Ltd.
 JUMO House
 Temple Bank, Riverway
 Harlow, Essex CM20 2DY, UK
 Phone: +44 1279 635533
 Fax: +44 1279 635262
 E-mail: sales@jumo.co.uk
 Internet: www.jumo.co.uk

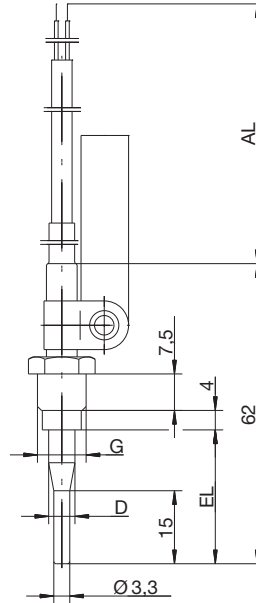
JUMO Process Control, Inc.
 8 Technology Boulevard
 Canastota, NY 13032, USA
 Phone: 315-697-5866
 1-800-554-JUMO
 Fax: 315-697-5867
 E-mail: info@jumo.us
 Internet: www.jumo.us



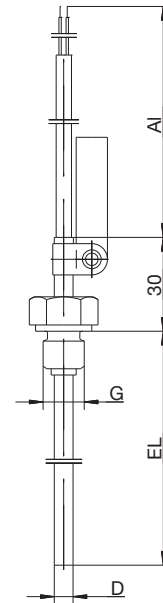
Dimensions



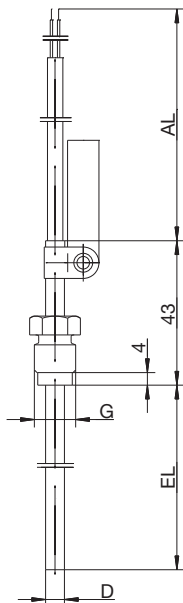
**Basic type 90.276-F40,
 902425/05 (DS)**
Basic type 902425/10 (DS)
Basic type 902425/50 (DS)
Basic type 902428/50 (DS)
Basic type 902455/50 (DS)



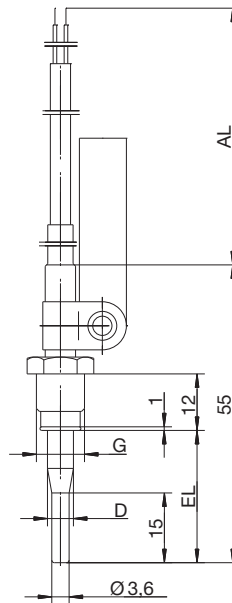
Basic type 902425/20 (DS)
Basic type 902428/20 (DS)
Basic type 902455/20 (DS)



Basic type 90.280-F50 (DL)
Basic type 902425/30 (DL)
Basic type 902428/30 (DL)
Basic type 902455/30 (DL)



Basic type 90.280-F50 (DL)
Basic type 902425/40 (DL)
Basic type 902428/40 (DL)
Basic type 902455/40 (DL)



Basic type 902425/50 (DS)
Basic type 902428/70 (DS)
Basic type 902455/70 (DS)

JUMO GmbH & Co. KG
 Delivery address: Mackenrodtstraße 14,
 36039 Fulda, Germany
 Postal address: 36035 Fulda, Germany
 Phone: +49 661 6003-0
 Fax: +49 661 6003-607
 E-mail: mail@jumo.net
 Internet: www.jumo.net

JUMO Instrument Co. Ltd.
 JUMO House
 Temple Bank, Riverway
 Harlow, Essex CM20 2DY, UK
 Phone: +44 1279 635533
 Fax: +44 1279 635262
 E-mail: sales@jumo.co.uk
 Internet: www.jumo.co.uk

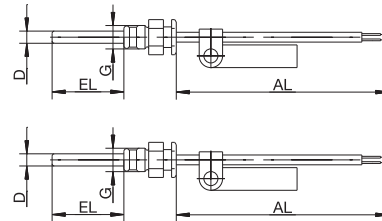
JUMO Process Control, Inc.
 8 Technology Boulevard
 Canastota, NY 13032, USA
 Phone: 315-697-5866
 1-800-554-JUMO
 Fax: 315-697-5867
 E-mail: info@jumo.us
 Internet: www.jumo.us



Order details: Heat meter RTD temperature probe with connection cable,
 PTB approved 22.30/89.07 (.08; .09), 22.30/99.10, 22.70/99.10, 22.30/02.03, 22.70/02.03

(1) Basic type

902425/10	Screw-in RTD temperature probe for direct installation (DS) with loose screw connection and plain thermowell T _{max.} = 105 °C
902425/50 (902425/05 90.276-F40)	Screw-in RTD temperature probe for direct installation (DS) with loose screw connection and plain thermowell T _{max.} = 150 °C (902425/05 not for new developments)



(2) Operating temperature in °C

x x	815	0 to 105 °C/PVC 105, PUR (only in 2-wire circuit)
x	824	0 to 150 °C/Silicone

(3) Measuring insert

x x	1003	1x Pt100 in 2-wire circuit
x x	1004	1x Pt500 in 2-wire circuit
x x	1005	1x Pt1000 in 2-wire circuit
x	1011	1x Pt100 in 4-wire circuit
x	1012	1x Pt500 in 4-wire circuit
x	1013	1x Pt1000 in 4-wire circuit

(4) Tolerance class as per DIN EN 60751

x x	1	Class B (standard)
x	2	Class A
x	3	Class AA (1/3 DIN B)

(5) Thermowell diameter D in mm

x x	5	Ø 5 mm
x x	5.2	Ø 5.2 mm

(6) Fitting length EL in mm (25 to 60 mm)

x x	26	26 mm
x x	...	Specifications in plain text

(7) Process connection G

x x	114	Screw connection M 10x1
-----	-----	-------------------------

(8) Connection cable termination

x x	04	Tin-plated wires (only for permanently connected temperature probes on the arithmetic unit)
x x	11	Ferrules as per DIN 46228 Part 4 (standard)

(9) Connection cable length AL in mm (> 500 mm)

x x	1500	1500 mm
x x	2500	2500 mm (Standard)
x x	...	Specifications in plain text (500 mm steps)

(10) Extra codes

x x	000	None
x x	317	Shielded connection cable
x x	318	Connection cable, helical (only PUR)
x x	340	Version paired as per DIN EN 1434 ²
x x	341	Version paired as per DIN EN 1434 and calibrated ^{2, 3}

Order code	(1)	(2)	(3)	(4)	(5)	(6)	(7)	(8)	(9)	(10)	...									
Order example	902425/10	-	815	-	1003	-	1	-	5.2	-	26	-	114	-	11	-	2500	/	341	...

¹ List extra codes in sequence, separated by commas.

² Price for pairing depends on the quantity; minimum quantity for paired temperature probes: 30 pairs for versions not in stock.

³ Calibration fees as per Federal Law Gazette No. 28 dd. 1.8.2001, quantity-dependent, not subject to discounts

JUMO GmbH & Co. KG
 Delivery address: Mackenrodtstraße 14,
 36039 Fulda, Germany
 Postal address: 36035 Fulda, Germany
 Phone: +49 661 6003-0
 Fax: +49 661 6003-607
 E-mail: mail@jumo.net
 Internet: www.jumo.net

JUMO Instrument Co. Ltd.
 JUMO House
 Temple Bank, Riverway
 Harlow, Essex CM20 2DY, UK
 Phone: +44 1279 635533
 Fax: +44 1279 635262
 E-mail: sales@jumo.co.uk
 Internet: www.jumo.co.uk

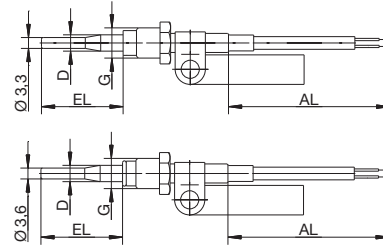
JUMO Process Control, Inc.
 8 Technology Boulevard
 Canastota, NY 13032, USA
 Phone: 315-697-5866
 1-800-554-JUMO
 Fax: 315-697-5867
 E-mail: info@jumo.us
 Internet: www.jumo.us



**Order details: Heat meter RTD temperature probe with connection cable,
 PTB approved 22.30/99.04, 22.70/99.04, 22.30/02.09, 22.70/02.09**

(1) Basic type

902425/20	Screw-in RTD temperature probe for direct installation (DS) with loose screw connection and stepped thermowell, T _{max.} = 180 °C
902425/50	Screw-in RTD temperature probe for direct installation (DS) with loose screw connection and stepped thermowell, T _{max.} = 150 °C



(2) Operating temperature in °C

x x	815	0 to 105 °C/PVC 105, PUR (only in 2-wire circuit)
x x	824	0 to 150 °C/Silicone
x	830	0 to 180 °C/Silicone

(3) Measuring insert

x x	1003	1x Pt100 in 2-wire circuit
x x	1004	1x Pt500 in 2-wire circuit
x x	1005	1x Pt1000 in 2-wire circuit
x x	1011	1x Pt100 in 4-wire circuit
x x	1012	1x Pt500 in 4-wire circuit
x x	1013	1x Pt1000 in 4-wire circuit

(4) Tolerance class as per DIN EN 60751

x x	1	Class B (standard)
x	2	Class A
x	3	Class AA (1/3 DIN B)

(5) Thermowell diameter D in mm

x	5.4	Ø 5.4 mm stepped down to Ø 3.3 mm
x	5.4	Ø 5.4 mm stepped down to Ø 3.6 mm

(6) Fitting length EL in mm (25 to 60 mm)

x x	27.5	27.5 mm
x	38	38 mm
x	...	Specifications in plain text

(7) Process connection G

x x	114	Screw connection M 10x1
-----	-----	-------------------------

(8) Connection cable termination

x x	04	Tin-plated wires (only for permanently connected temperature probes on the arithmetic unit)
x x	11	Ferrules as per DIN 46228 Part 4 (standard)

(9) Connection cable length AL in mm (> 500 mm)

x x	1500	1500 mm
x x	2500	2500 mm (Standard)
x x	...	Specifications in plain text (500 mm steps)

(10) Extra codes

x x	000	None
x x	317	Shielded connection cable
x x	318	Connection cable, helical (only PUR)
x x	340	Version paired as per DIN EN 1434 ²
x x	341	Version paired as per DIN EN 1434 and calibrated ^{2, 3}

Order code	(1)	(2)	(3)	(4)	(5)	(6)	(7)	(8)	(9)	(10)	...	¹							
Order example	902425/20	-	824	-	1003	-	1	-	5.4	-	27.5	-	114	-	11	-	2500	/	341

¹ List extra codes in sequence, separated by commas.

² Price for pairing depends on the quantity; minimum quantity for paired temperature probes: 30 pairs for versions not in stock.

³ Calibration fees as per Federal Law Gazette No. 28 dd. 1.8.2001, quantity-dependent, not subject to discounts

JUMO GmbH & Co. KG
 Delivery address: Mackenrodtstraße 14,
 36039 Fulda, Germany
 Postal address: 36035 Fulda, Germany
 Phone: +49 661 6003-0
 Fax: +49 661 6003-607
 E-mail: mail@jumo.net
 Internet: www.jumo.net

JUMO Instrument Co. Ltd.
 JUMO House
 Temple Bank, Riverway
 Harlow, Essex CM20 2DY, UK
 Phone: +44 1279 635533
 Fax: +44 1279 635262
 E-mail: sales@jumo.co.uk
 Internet: www.jumo.co.uk

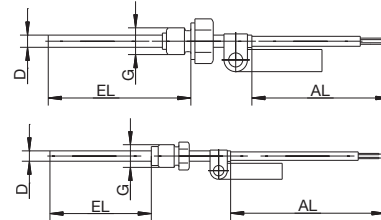
JUMO Process Control, Inc.
 8 Technology Boulevard
 Canastota, NY 13032, USA
 Phone: 315-697-5866
 1-800-554-JUMO
 Fax: 315-697-5867
 E-mail: info@jumo.us
 Internet: www.jumo.us



Order details: Heat meter RTD temperature probe with connection cable, PTB approved 22.30/91.05; 22.70/00.01

(1) Basic type

902425/30	Screw-in RTD temperature probe for direct installation (DL) with permanent screw connection and plain thermowell
902425/40	Screw-in RTD temperature probe for direct installation (DL) with loose screw connection and plain thermowell
(2) Operating temperature in °C	
x x	824 0 to 150 °C/Silicone
x x	830 0 to 180 °C/Silicone
(3) Measuring insert	
x x	1003 1x Pt100 in 2-wire circuit
x x	1004 1x Pt500 in 2-wire circuit
x x	1005 1x Pt1000 in 2-wire circuit
x x	1011 1x Pt100 in 4-wire circuit
x x	1012 1x Pt500 in 4-wire circuit
x x	1013 1x Pt1000 in 4-wire circuit
(4) Tolerance class as per DIN EN 60751	
x x	1 Class B (standard)
x x	2 Class A
x x	3 Class AA (1/3 DIN B)
(5) Thermowell diameter D in mm	
x x	6 Ø 6 mm
x	8 Ø 8 mm stepped down to Ø 6 mm
(6) Fitting length EL in mm (60 to 400 mm)	
x x	85 85 mm
x x	120 120 mm
x	210 210 mm (only for Ø 8 mm stepped down to Ø 6 mm)
x x	... Specifications in plain text
(7) Process connection G	
x x	102 Screw connection G 1/4
x	104 Screw connection G 1/2
x x	... Specifications in plain text
(8) Connection cable termination	
x x	04 Tin-plated wires (only for permanently connected temperature probes on the arithmetic unit)
x x	11 Ferrules as per DIN 46228 Part 4 (standard)
(9) Connection cable length AL in mm (> 500 mm)	
x x	1500 1500 mm
x x	2500 2500 mm (Standard)
x x	... Specifications in plain text (500 mm steps)
(10) Extra codes	
x x	000 None
x x	317 Shielded connection cable
x x	340 Version paired as per DIN EN 1434 ²
x x	341 Version paired as per DIN EN 1434 and calibrated ^{2, 3}



Order code	(1)	(2)	(3)	(4)	(5)	(6)	(7)	(8)	(9)	(10)	...
Order example	902425/30	- 830	- 1003	- 1	- 6	- 120	- 104	- 11	- 2500	/ 341	...

¹ List extra codes in sequence, separated by commas.

² Price for pairing depends on the quantity; minimum quantity for paired temperature probes: 30 pairs for versions not in stock.

³ Calibration fees as per Federal Law Gazette No. 28 dd. 1.8.2001, quantity-dependent, not subject to discounts

JUMO GmbH & Co. KG
 Delivery address: Mackenrodtstraße 14,
 36039 Fulda, Germany
 Postal address: 36035 Fulda, Germany
 Phone: +49 661 6003-0
 Fax: +49 661 6003-607
 E-mail: mail@jumo.net
 Internet: www.jumo.net

JUMO Instrument Co. Ltd.
 JUMO House
 Temple Bank, Riverway
 Harlow, Essex CM20 2DY, UK
 Phone: +44 1279 635533
 Fax: +44 1279 635262
 E-mail: sales@jumo.co.uk
 Internet: www.jumo.co.uk

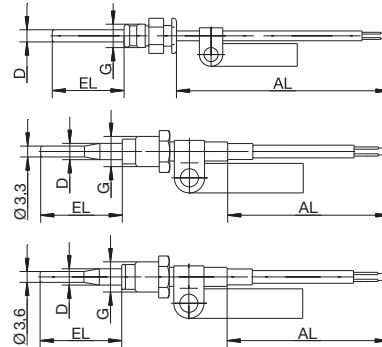
JUMO Process Control, Inc.
 8 Technology Boulevard
 Canastota, NY 13032, USA
 Phone: 315-697-5866
 1-800-554-JUMO
 Fax: 315-697-5867
 E-mail: info@jumo.us
 Internet: www.jumo.us



**Order details: Heat meter RTD temperature probe with connection cable,
 MID approved A0445-2112-2007, DE-06-MI004-PTB010, DE-06-MI004-PTB012**

(1) Basic type

902428/50	Screw-in RTD temperature probe for direct installation (DS) with loose screw connection and plain thermowell T _{max.} = 150°C
902428/20	Screw-in RTD temperature probe for direct installation (DS) with loose screw connection and stepped thermowell T _{max.} = 180°C
902428/70	Screw-in RTD temperature probe for direct installation (DS) with loose screw connection and stepped thermowell, T _{max.} = 150°C



(2) Operating temperature in °C

x x x	815	0 to 105 °C/PVC 105, PUR (only in 2-wire circuit)
x x x	824	0 to 150 °C/Silicone
x	830	0 to 180 °C/Silicone

(3) Measuring insert

x x x	1003	1x Pt100 in 2-wire circuit
x x x	1004	1x Pt500 in 2-wire circuit
x x x	1005	1x Pt1000 in 2-wire circuit
x x x	1011	1x Pt100 in 4-wire circuit
x x x	1012	1x Pt500 in 4-wire circuit
x x x	1013	1x Pt1000 in 4-wire circuit

(4) Tolerance class as per DIN EN 60751

x x x	1	Class B (standard)
x	2	Class A
x	3	Class AA (1/3 DIN B)

(5) Thermowell diameter D in mm

x	5	Ø 5 mm
x	5.2	Ø 5.2 mm
x	5.4	Ø 5.4 mm stepped down to Ø 3.3 mm
x	5.4	Ø 5.4 mm stepped down to Ø 3.6 mm

(6) Fitting length EL in mm (25 to 60 mm)

x	26	26 mm
x x x	27.5	27.5 mm
x	38	38 mm
x x	...	Specifications in plain text

(7) Process connection G

x x x	114	Screw connection M 10x1
-------	-----	-------------------------

(8) Connection cable termination

x x x	04	Tin-plated wires (only for permanently connected temperature probes on the arithmetic unit)
x x x	11	Ferrules as per DIN 46228 Part 4 (standard)

(9) Connection cable length AL in mm (> 500 mm)

x x x	1500	1500 mm
x x x	2500	2500 mm (Standard)
x x x	...	Specifications in plain text (500 mm steps)

(10) Extra codes

x x x	000	None
x x x	317	Shielded connection cable
x x x	318	Connection cable, helical (only PUR)
x x x	340	Version paired as per DIN EN 1434 ²
x x x	761	Version paired with CE and metrology sign (first calibration) ²

Order code (1) (2) (3) (4) (5) (6) (7) (8) (9) (10) ...¹
Order example 902428/20 - 830 - 1003 - 1 - 5.4 - 27.5 - 114 - 11 - 2500 / 761

¹ List extra codes in sequence, separated by commas.

² Price for pairing depends on the quantity; minimum quantity for paired temperature probes: 30 pairs for versions not in stock.

JUMO GmbH & Co. KG
 Delivery address: Mackenrodtstraße 14,
 36039 Fulda, Germany
 Postal address: 36035 Fulda, Germany
 Phone: +49 661 6003-0
 Fax: +49 661 6003-607
 E-mail: mail@jumo.net
 Internet: www.jumo.net

JUMO Instrument Co. Ltd.
 JUMO House
 Temple Bank, Riverway
 Harlow, Essex CM20 2DY, UK
 Phone: +44 1279 635533
 Fax: +44 1279 635262
 E-mail: sales@jumo.co.uk
 Internet: www.jumo.co.uk

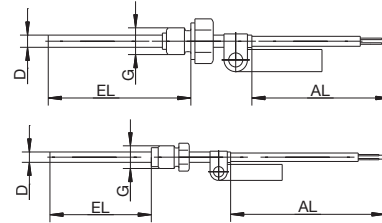
JUMO Process Control, Inc.
 8 Technology Boulevard
 Canastota, NY 13032, USA
 Phone: 315-697-5866
 1-800-554-JUMO
 Fax: 315-697-5867
 E-mail: info@jumo.us
 Internet: www.jumo.us



Order details: Heat meter RTD temperature probe with connection cable, MID approved DE-06-MI004-PTB011

(1) Basic type

902428/30	Screw-in RTD temperature probe for direct installation (DL) with permanent screw connection and plain thermowell
902428/40	Screw-in RTD temperature probe for direct installation (DL) with flange and loose screw connection and plain thermowell



(2) Operating temperature in °C

x x	815	0 to 105 °C/PVC 105, PUR (only in 2-wire circuit)
x x	824	0 to 150 °C/Silicone
x x	830	0 to 180 °C/Silicone

(3) Measuring insert

x x	1003	1x Pt100 in 2-wire circuit
x x	1004	1x Pt500 in 2-wire circuit
x x	1005	1x Pt1000 in 2-wire circuit
x x	1011	1x Pt100 in 4-wire circuit
x x	1012	1x Pt500 in 4-wire circuit
x x	1013	1x Pt1000 in 4-wire circuit

(4) Tolerance class as per DIN EN 60751

x x	1	Class B (standard)
x x	2	Class A
x x	3	Class AA (1/3 DIN B)

(5) Thermowell diameter D in mm

x x	6	Ø 6 mm
x x	8	Ø 8 mm stepped down to Ø 6 mm

(6) Fitting length EL in mm (60 to 210 mm)

x x	85	85 mm
x x	120	120 mm
x x	210	210 mm (only for Ø 8 mm stepped down to Ø 6 mm)
x x	...	Specifications in plain text

(7) Process connection G

x x	102	Screw connection G 1/4
x x	104	Screw connection G 1/2
x x	...	Specifications in plain text

(8) Connection cable termination

x x	04	Tin-plated wires (only for permanently connected temperature probes on the arithmetic unit)
x x	11	Ferrules as per DIN 46228 Part 4 (standard)

(9) Connection cable length AL in mm (> 500 mm)

x x	1500	1500 mm
x x	2500	2500 mm (Standard)
x x	...	Specifications in plain text (500 mm steps)

(10) Extra codes

x x	000	None
x x	317	Shielded connection cable
x x	340	Version paired as per DIN EN 1434 ²
x x	761	Version paired with CE and metrology sign (first calibration) ²

Order code	(1)	(2)	(3)	(4)	(5)	(6)	(7)	(8)	(9)	(10)	...									
Order example	902428/30	-	830	-	1003	-	1	-	6	-	120	-	104	-	11	-	2500	/	761	...

¹ List extra codes in sequence, separated by commas.

² Price for pairing depends on the quantity; minimum quantity for paired temperature probes: 30 pairs for versions not in stock.

JUMO GmbH & Co. KG
 Delivery address: Mackenrodtstraße 14,
 36039 Fulda, Germany
 Postal address: 36035 Fulda, Germany
 Phone: +49 661 6003-0
 Fax: +49 661 6003-607
 E-mail: mail@jumo.net
 Internet: www.jumo.net

JUMO Instrument Co. Ltd.
 JUMO House
 Temple Bank, Riverway
 Harlow, Essex CM20 2DY, UK
 Phone: +44 1279 635533
 Fax: +44 1279 635262
 E-mail: sales@jumo.co.uk
 Internet: www.jumo.co.uk

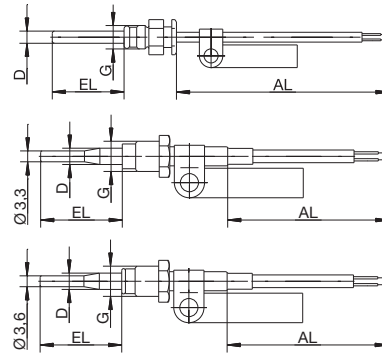
JUMO Process Control, Inc.
 8 Technology Boulevard
 Canastota, NY 13032, USA
 Phone: 315-697-5866
 1-800-554-JUMO
 Fax: 315-697-5867
 E-mail: info@jumo.us
 Internet: www.jumo.us



Order details: Cold / combined cold/heat meter RTD temperature probe with connection cable,
 PTB approved 22.77/08.04 and
 MID approved DE-06-MI004-PTB010, DE-06-MI004-PTB012, A0445-2112-2007

(1) Basic type

902455/50	Screw-in RTD temperature probe for direct installation (DS) with loose screw connection and plain thermowell
902455/20	Screw-in RTD temperature probe for direct installation (DS) with loose screw connection and stepped thermowell
902455/70	Screw-in RTD temperature probe for direct installation (DS) with loose screw connection and stepped thermowell



(2) Operating temperature in °C

x x x	815	0 to 105 °C/TPE (only in 2-wire circuit)
x x x	824	0 to 50 °C/Silicone

(3) Measuring insert

x x x	1003	1x Pt100 in 2-wire circuit
x x x	1004	1x Pt500 in 2-wire circuit
x x x	1005	1x Pt1000 in 2-wire circuit
x x x	1011	1x Pt100 in 4-wire circuit
x x x	1012	1x Pt500 in 4-wire circuit
x x x	1013	1x Pt1000 in 4-wire circuit

(4) Tolerance class as per DIN EN 60751

x x x	1	Class B (standard)
x	2	Class A
x	3	Class AA (1/3 DIN B)

(5) Thermowell diameter D in mm

x	5	Ø 5 mm
x	5.2	Ø 5.2 mm
x	5.4	Ø 5.4 mm stepped down to Ø 3.3
x	5.4	Ø 5.4 mm stepped down to Ø 3.6

(6) Fitting length EL in mm (25 to 60 mm)

x	26	26 mm
x x x	27.5	27.5 mm
x	38	38 mm
x x	...	Specifications in plain text

(7) Process connection G

x x x	114	Screw connection M 10x1
-------	-----	-------------------------

(8) Connection cable termination

x x x	04	Tin-plated wires (only for permanently connected temperature probes on the arithmetic unit)
x x x	11	Ferrules as per DIN 46228 Part 4 (standard)

(9) Connection cable length AL in mm (> 500 mm)

x x x	1500	1500 mm
x x x	2500	2500 mm (Standard)
x x x	...	Specifications in plain text (500 mm steps)

(10) Extra codes

x x x	000	None
x x x	317	Shielded connection cable
x x x	340	Version paired as per DIN EN 1434 ²
x x x	341	Version paired as per DIN EN 1434 and calibrated (cold, only for Germany) ²
x x x	761	Version paired with CE and metrology sign (first calibration, heat) ^{2,3}

Order code (1) (2) (3) (4) (5) (6) (7) (8) (9) (10) ...¹
Order example 902455/50 - 824 - 1003 - 1 - 5.2 - 26 - 114 - 11 - 2500 / 341, 761

¹ List extra codes in sequence, separated by commas.
² Price for pairing depends on the quantity; minimum quantity for paired temperature probes: 30 pairs for versions not in stock.
³ Calibration fees as per Federal Law Gazette No. 28 dd. 1.8.2001, quantity-dependent, not subject to discounts

JUMO GmbH & Co. KG
 Delivery address: Mackenrodtstraße 14,
 36039 Fulda, Germany
 Postal address: 36035 Fulda, Germany
 Phone: +49 661 6003-0
 Fax: +49 661 6003-607
 E-mail: mail@jumo.net
 Internet: www.jumo.net

JUMO Instrument Co. Ltd.
 JUMO House
 Temple Bank, Riverway
 Harlow, Essex CM20 2DY, UK
 Phone: +44 1279 635533
 Fax: +44 1279 635262
 E-mail: sales@jumo.co.uk
 Internet: www.jumo.co.uk

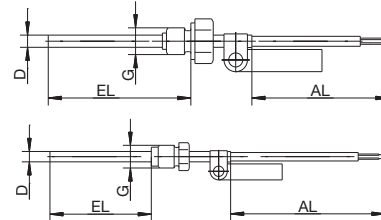
JUMO Process Control, Inc.
 8 Technology Boulevard
 Canastota, NY 13032, USA
 Phone: 315-697-5866
 1-800-554-JUMO
 Fax: 315-697-5867
 E-mail: info@jumo.us
 Internet: www.jumo.us



Order details: Cold / combined cold/heat meter RTD temperature probes with connection cable,
 PTB approved 22.77/09.01 and MID approved DE-06-MI004-PTB011

(1) Basic type

	902455/30	Screw-in RTD temperature probe for direct installation (DL) with permanent screw connection and plain thermowell
	902455/40	Screw-in RTD temperature probe for direct installation (DL) with flange and loose screw connection and plain thermowell
	(2) Operating temperature in °C	
x x	824	0 to 150 °C/Silicone
	(3) Measuring insert	
x x	1003	1x Pt100 in 2-wire circuit
x x	1004	1x Pt500 in 2-wire circuit
x x	1005	1x Pt1000 in 2-wire circuit
x x	1011	1x Pt100 in 4-wire circuit
x x	1012	1x Pt500 in 4-wire circuit
x x	1013	1x Pt1000 in 4-wire circuit
	(4) Tolerance class as per DIN EN 60751	
x x	1	Class B (standard)
x x	2	Class A
x x	3	Class AA (1/3 DIN B)
	(5) Thermowell diameter D in mm	
x x	6	Ø 6 mm
x x	8	Ø 8 mm stepped down to Ø 6 mm
	(6) Fitting length EL in mm (60 to 210 mm)	
x x	85	85 mm
x x	120	120 mm
x	210	210 mm (only for Ø 8 mm stepped down to Ø 6 mm)
x x	...	Specifications in plain text
	(7) Process connection G	
x x	102	Screw connection G 1/4
x	104	Screw connection G 1/2
x x	...	Specifications in plain text
	(8) Connection cable termination	
x x	04	Tin-plated wires (only for permanently connected temperature probes on the arithmetic unit)
x x	11	Ferrules as per DIN 46228 Part 4 (standard)
	(9) Connection cable length AL in mm (> 500 mm)	
x x	1500	1500 mm
x x	2500	2500 mm (Standard)
x x	...	Specifications in plain text (500 mm steps)
	(10) Extra codes	
x x	000	None
x x	317	Shielded connection cable
x x	340	Version paired as per DIN EN 1434 ²
x x	341	Version paired as per DIN EN 1434 and calibrated (cold, only for Germany) ²
x x	761	Version paired with CE and metrology sign (first calibration, heat) ^{2,3}



Order code	(1)	(2)	(3)	(4)	(5)	(6)	(7)	(8)	(9)	(10)	...									
Order example	902455/30	-	824	-	1003	-	1	-	6	-	120	-	104	-	11	-	2500	/	341.761	...

¹ List extra codes in sequence, separated by commas.
² Price for pairing depends on the quantity; minimum quantity for paired temperature probes: 30 pairs for versions not in stock.
³ Calibration fees as per Federal Law Gazette No. 28 dd. 1.8.2001, quantity-dependent, not subject to discounts